

Always a spotless rotisserie

TDR-7/8 S Auto-Clean

Save time, save costs and boost your sales with a spotless cooking theatre that offers all the benefits of a traditional Fri-Jado rotisserie. Save at least one hour of labor every day as manually cleaning the rotisserie's cavity and accessories belongs to the past! The TDR auto-clean enables the operator to spend their valuable time on what's most important: serving customers.

The TDR-7/8 S Auto-Clean reduces operational and maintenance costs. It has a surprisingly low water consumption. It does not have any door seals that need frequent replacement. Our rotisserie cleaning cartridge is safe to use for any operator; no direct contact of chemicals.

With its compact dimensions, the TDR-7/8 S Auto-Clean is likely to fit your store. It has an open cavity, providing the benefits of a traditional Fri-Jado rotisserie: preparing crispy and delicious rotisserie chickens that maintain their attractive appearance for hours.



Features TDR-7/8 S Auto-Clean

Top features

- Touch screen controls
- Automatic cleaning system compatible with Fri-Jado Rotisserie Cleaner
- Roasting theatre creates an in-store food experience and stimulates impulse purchases
- 250 programs with up to 9 cook stages per program
- Cook Correction detects and corrects abnormalities during the cook cycle
- Endless possibilities: poultry (parts), pork roast, ribs, lamb, roast beef, pork belly, meat loaf, porchetta and other proteins
- Optional Wi-Fi for monitoring and recipe management via the cloud based Rotisserie Dashboard

Standard characteristics

- Supplied on matching stand
- 8 V-spit positions, 7 basket or rack positions
- Rotor for up to 24 chickens (3.5 lbs) per batch
- USB connection for easy transfer of data and programs
- Range of accessories available for preparation of chicken, chicken parts, ribs, etc.

Accessories

- V-spits
- Baskets
- Chicken racks
- Ventless hood
- Heated grease reservoir

Also available as stacked combination 7/8 S + 7/8 S Auto-Clean



Optional heated grease reservoir



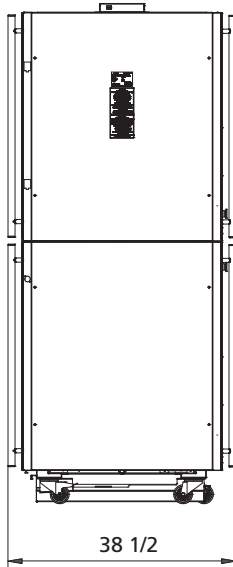
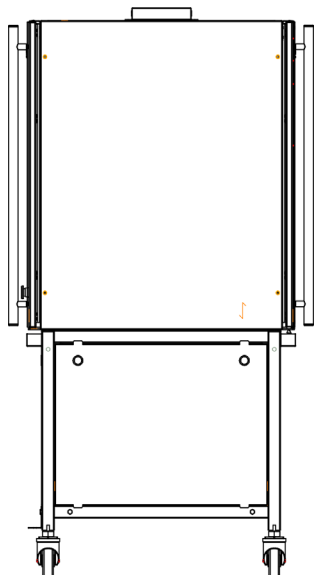
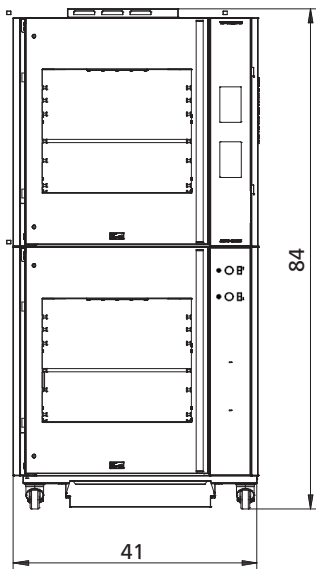
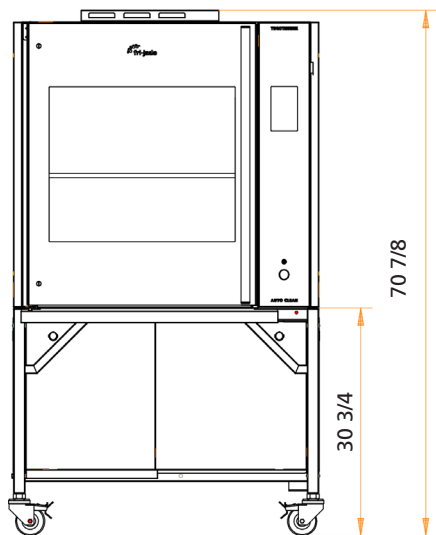
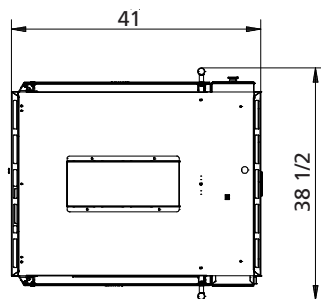
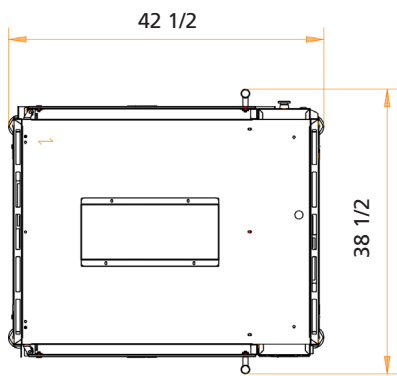
Auto-clean function



Open cavity, no door seals



TDR-7/8 S + TDR-7/8 S Auto-Clean



TDR-7/8 S Auto-Clean

Dimensions TDR-7/8 S Auto-Clean including underframe

| | |
|--------|---------|
| Width | 42 1/2" |
| Depth | 38 1/2" |
| Height | 70 7/8" |

Technical data TDR-7/8 S Auto-Clean including underframe

| | |
|--------------|-------------|
| Net weight | 540 lbs |
| Gross weight | 654 lbs |
| Voltage | 3~ 208 V |
| Frequency | 50/60 Hz |
| Power | 12 kW |
| Plug | NEMA 15-50P |

Additional technical data

| | |
|----------------------------|--------------------|
| Water connection (aerated) | 3/4" |
| Min. water pressure | 29 PSI (200 kPa) |
| Max. water pressure | 72.5 PSI (500 kPa) |
| Acidity | 7.0 - 8.0 pH |
| Chlorides | <30 ppm |
| Hardness* | <4 dH |
| Drain (open connection) | min. 1 5/8" |

TDR-7/8+ 7/8 S Auto-Clean

Dimensions TDR-7/8 + 7/8 S Auto-Clean

| | |
|--------|---------|
| Width | 41" |
| Depth | 38 1/2" |
| Height | 84" |

Technical data TDR-7/8 + 7/8 S Auto-Clean

| | |
|--------------|------------------|
| Net weight | 948 lbs |
| Gross weight | 1059 lbs |
| Voltage | 3~ 208 V |
| Frequency | 50/60 Hz |
| Power | 12 kW (2x) |
| Plug | NEMA 15-50P (2x) |

Additional technical data

| | |
|----------------------------|--------------------|
| Water connection (aerated) | 3/4" (1x) |
| Min. water pressure | 29 PSI (200 kPa) |
| Max. water pressure | 72.5 PSI (500 kPa) |
| Acidity | 7.0 - 8.0 pH |
| Chlorides | <30 ppm |
| Hardness* | <4 dH |
| Drain (open connection) | min. 1 5/8" (2x) |

* Water hardness and descaling filters.

A descaling filter is advised when the hardness of the water is >4° dH (4 Grains/Gal). A descaling filter is mandatory when the hardness of the water is >20° dH (20 Grains/Gal).

Fri-Jado Inc.

1401 Davey Road

Suite 100

Woodridge IL 60517

Toll free 877-374-5236

Fax 630-689-1424

e-mail us.info@frijado.com

frijado.com

Specifications and technical data are subject to amendment without prior notice.

These are basic drawings. For more detailed technical information, please refer to the installation manual at www.frijado.com.

