

Maximum transparency, premium technology

Table Top Display MTT  
2 levels



## Modular Table Top Display MTT - The compact solution for hot grab-and-go food

Maximum transparency for the best view of your food, premium hot holding technology for a long product shelf life and a compact design that fits in anywhere: Meet Fri-Jado's Modular Table Top Display MTT. The MTT is the ideal compact solution to boost your profits from packaged grab-and-go products, while saving up to 50% on energy consumption and costs.

Equipped with premium Hot Blanket holding technology, the MTT keeps your food safe and delicious for longer. A combination of energy efficient hot air recirculation per shelf and mild shelf heating fully encloses the products and keeps them at consistent core temperatures.

The Multi Temp feature of the MTT allows you to set temperatures individually for each shelf, in order to fine-tune the holding conditions for hot products from different food groups.



MTT accessories



Hot Blanket holding technology



Optimal visibility



Solid back or rear loading model

### MTT - Hot Self Serve Open Display

- Heated self serve table top display with 2 levels
- Designed for packaged products
- 24 or 36 inches wide
- Solid back or rear loading model with folding doors on the back
- Transparent design: Food = hero!
- Superior Hot Blanket holding technology extends product shelf life
- Efficient hot air recirculation per shelf - up to 50% energy savings
- Multi Temp feature - each shelf can be set at its own temperature (between 104°F and 158°F)
- LED shelf lighting with natural colour reproduction
- Adjustable top shelf angle
- Price rail set included
- Total presentation area
  - MTT 24: 4.41 ft<sup>2</sup>
  - MTT 36: 7.10 ft<sup>2</sup>
- Footprint
  - MTT 24: 3.94 ft<sup>2</sup>
  - MTT 36: 5.91 ft<sup>2</sup>
- Plug & play - doesn't require installation

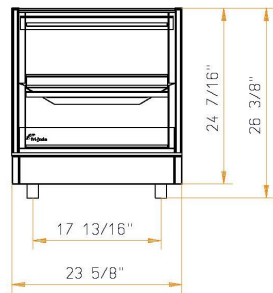
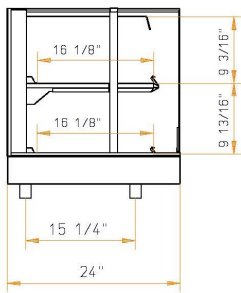
### Accessories

- Condiment holder
- Shelf insert tray
- Shelf divider
- Merchandising rack

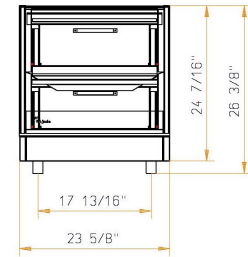
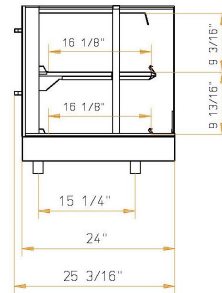
	MTT 24 - 2 level	MTT 36 - 2 level
Width	23 5/8"	35 7/16"
Depth	24"	24"
Height on legs	26 3/8"	26 3/8"
Net weight solid back / rear loading	130 lb / 139 lb	174 lb / 187 lb
Voltage	1~ 208 V	1~ 208 V
Frequency	50/60 Hz	50/60 Hz
Power	1.3 kW	1.9 kW
Plug	NEMA 6-15P	NEMA 6-15P

## MTT 60

### Solid back

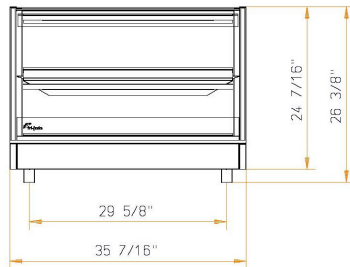
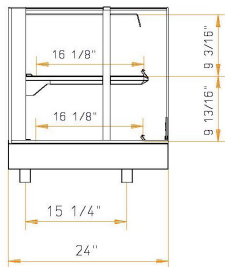


### Rear loading

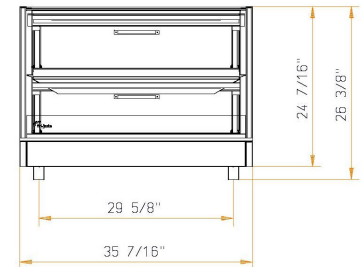
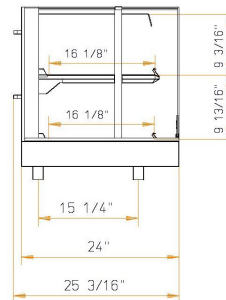


## MTT 90

### Solid back



### Rear loading



Specifications and technical data are subject to amendment without notice.

These are basic drawings. For more detailed technical information, please refer to the installation manual at [www.frijado.com](http://www.frijado.com).



The MTT is ETL listed (meets UL standard 197, NSF standard 4 and CSA standard C22.2 No. 109).



Fri-Jado Inc.  
1401 Davey Road  
Suite 100  
Woodridge IL 60517  
Toll free 877-374-5236  
e-mail [us.info@frijado.com](mailto:us.info@frijado.com)  
[www.frijado.com](http://www.frijado.com)